



P K PUMPS PVT.LTD.

AN ISO 9001-2008 COMPANY



PROCESS PUMPS

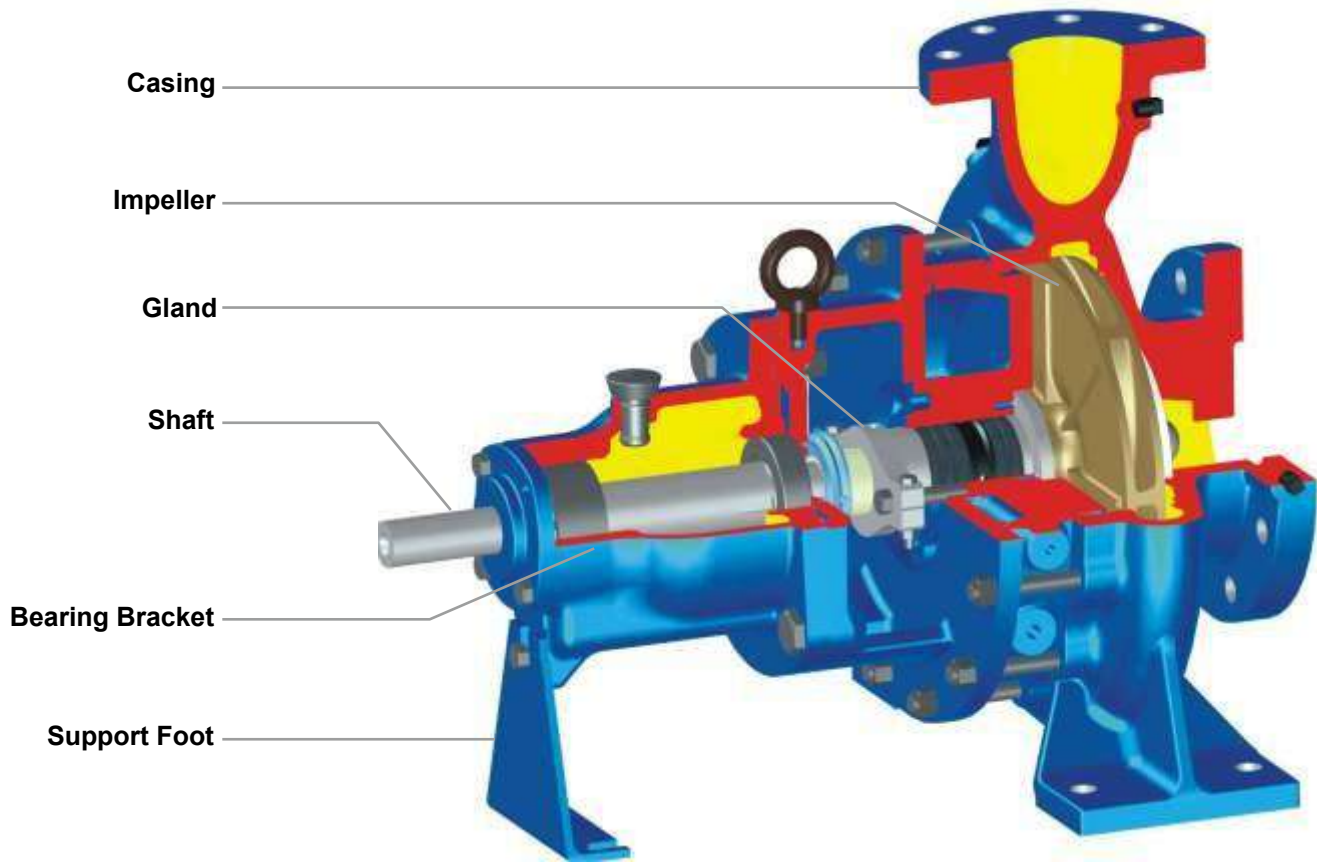
TYPE-PKD / PKD-QF / PKDJ

P.K.PUMPS PVT LTD



www.pkpumps.in





RANGE

Delivery size : up to 200 mm
 Capacity : up to 900 m³/hr
 Head : up to 225 metres
 Working Pressures : 16-30 kg/cm²
 Temperature : (-)50°C to +350°C

APPLICATIONS

Chemical Process Industries, Petro Chemical, Nuclear, Refinery, Paper, Power Plants and Sugar Plants etc.
 Pumps suitable for handling Corrosive Liquids, Alkalies, Salt Solutions, Caustics, Hydro Carbons, Oils, Thermic Fluids, Liquefied Gases, Condensates, Viscous Liquids and Congealing Liquid etc.



P K PUMPS PVT.LTD.

AN ISO 9001-2008 COMPANY

FEATURES

Pumps are as per EN 22858 (DIN 24256) and ISO 2858. The design is of back pull out type. Large variety of models are available to operate at 1450 rpm and 2900 rpm at 50Hz/60Hz.

Casing :

The casing has axial suction and top centre line delivery. Smooth hydraulic passages ensure high efficiency. Normal design is for foot mounted pumps. Centre line mounting for special applications are also available. Jacketed Casings are available for handling congealing liquid.

Impeller :

The impellers are of enclosed type and semi-open impellers can also be supplied. Hydraulic balancing of impellers is achieved either by back vanes or by balancing holes. The impellers are statically and dynamically balanced. Reliable fixing of the impeller on shaft is achieved by using helicoil insert under impeller nut. To improve NPSH performance, inducer can be supplied.

Shaft :

The shaft is supported by two antifriction bearings to take residual axial thrust and prevent axial float or radial run out. It is fully protected from the liquid handled by means of a shaft sleeve and gaskets between impeller nut, impeller hub and shaft sleeve.

Stuffing Box :

The stuffing box is sealed by gland packing or by cartridge type mechanical seal. Conversion from gland packing to mechanical seal is achieved by changing some standardised parts. Re-machining of stuffing box is not necessary. Stuffing box cooling is provided for operating temperature 105°C for gland packed and 140°C for mechanical seal fitted pumps.

Bearing :

The bearings are oil lubricated. For high temperature (above 180°C) application, bearing oil cooling arrangement is provided. All pumps are provided with reinforced bearing arrangement as standard supply.

Direction of Rotation :

Clockwise viewed from driving end.

Drive :

Pumps can be driven by electric motor or engine.

Flanges :

ANSI B 16.1, CL 125 Flat Face : for CI/BR

ANSI B 16.5, CL 150 Raised Face - for sp.metals viz. st. steel, cast steel etc.

Drilling as per DIN, ASA, BS etc. (Optional)

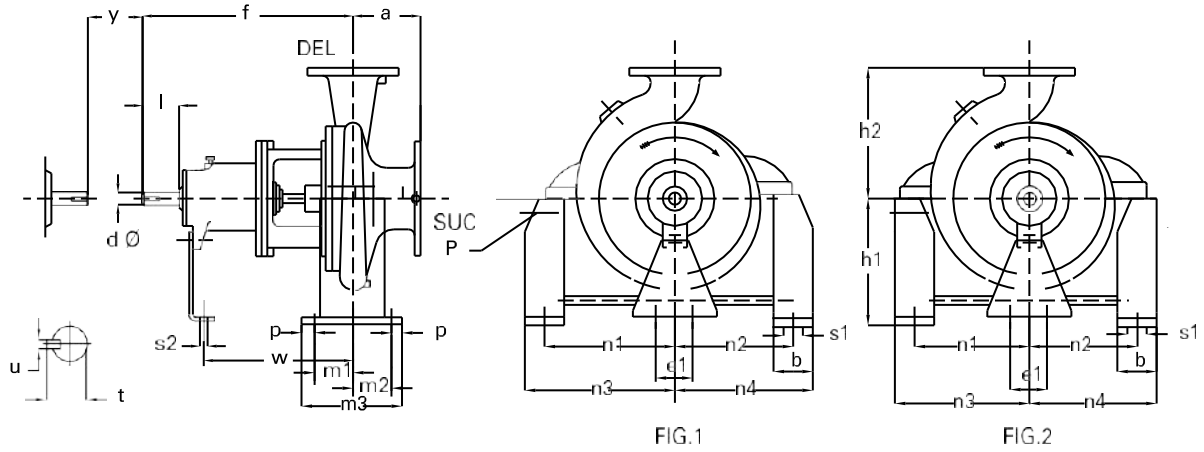


P K PUMPS PVT.LTD.

AN ISO 9001-2008 COMPANY

GENERAL DIMENSIONS / MOUNTING DETAILS

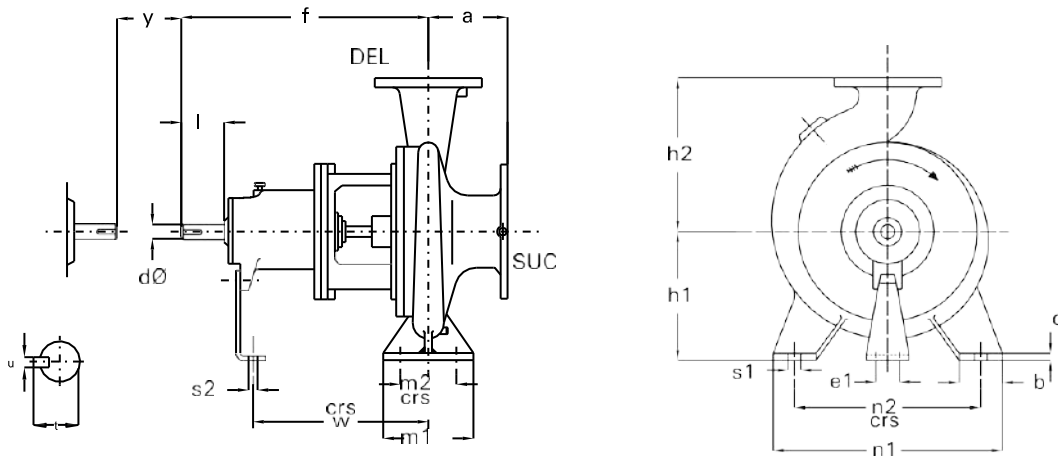
Centreline Mounted CLM Pump (PKD/PKD-QF)



PUMP TYPE	DRV. UNIT	PUMP DIMENSIONS											FOOT DIMENSIONS								SHAFT END						SPR.	FIG. NO.																						
		DEL	SUC	a	f	h1	h2	b	c	m1	m2	m3	n1	n2	n3	n4	w	s1	s2	e1	p	dØ	l	t	u	y																								
20/13 QF	4	20	25	80		140						125	125	157	157												1																							
20/16 QF						150						130	130	162	162													14	23	18	40	20.5	6	8	100															
20/20 QF						170						155	155	187	187																																			
25/16 QF	5	25	40	100		165						155	145	187	177	285																																		
32/13						140						125	125	157	157																																			
32/16		160	155	145	187	177																																												
32/20		180	170	165	202	197																																												
40/13		140	135	125	167	157																																												
40/16		160	40	65	80	385	200	64		72	88	190																																						
40/20		180																																								170	165	202	197					
50/13		160	50	80	100								170	165	202													197	14																					
50/16		180											170	165	202													197																						
50/20		200											170	165	202													197																						
65/13	180	65	100	100	180		15																																											
25/26A	7	25	50			225	500																																											
32/26		32	50			250																						90	89.5	110.5	230	260	240	305	285	110	15	15	15	15	15	15	15	15	15	15	15	15	15	
40/26		40	65			250																						90	89.5	110.5	230	260	230	305	275	110	15	15	15	15	15	15	15	15	15	15	15	15	15	15
40/32		40	65			225																						90	89.5	110.5	230	260	230	305	275	110	15	15	15	15	15	15	15	15	15	15	15	15	15	15
50/26		50	80	125		280																						90	89.5	110.5	230	260	230	305	275	110	15	15	15	15	15	15	15	15	15	15	15	15	15	15
50/32		50	80	125		200																						64	72	88	190	210	175	242	207	110	15	15	15	15	15	15	15	15	15	15	15	15	15	15
65/16		65	100	100		225																						64	72	88	190	210	175	242	207	110	15	15	15	15	15	15	15	15	15	15	15	15	15	15
65/20		65	100	100		250																						90	89.5	110.5	230	260	230	305	275	110	15	15	15	15	15	15	15	15	15	15	15	15	15	15
65/26		65	100	100		225																						64	72	88	190	210	175	242	207	110	15	15	15	15	15	15	15	15	15	15	15	15	15	15
80/16		80	125			250																						64	72	88	190	210	175	242	207	110	15	15	15	15	15	15	15	15	15	15	15	15	15	15
80/20	80	125			280		89.5	110.5	230	260	230	275	370	18	14	18	18	18	18	18	18	18	18	18	18	18	18	18																						
80/26	80	125			250	280	89.5	110.5	230	260	230	275	370	18	14	18	18	18	18	18	18	18	18	18	18	18	18	18																						
100/20	100	125			250	280	89.5	110.5	230	260	230	275	370	18	14	18	18	18	18	18	18	18	18	18	18	18	18	18																						
65/32	65	100			280		92.5	107.5	230	260	240	285	370	18	14	18	18	18	18	18	18	18	18	18	18	18	18	18																						
80/32	80	125			315	315	18	100	150	300	310	295	355	340	23	23	23	23	23	23	23	23	23	23	23	23	23	23																						
80/40	80	125			365	355	15	92.5	107.5	230	260	230	275	370	18	14	18	18	18	18	18	18	18	18	18	18	18	18																						
100/26	100	125			280	280	15	92.5	107.5	230	260	230	275	370	18	14	18	18	18	18	18	18	18	18	18	18	18	18																						
100/32	100	140			315	315	90																																											
100/40	100	140			365	355	90																																											
125/26	125	150			315	355	18	100	150	300	310	295	355	340	23	23	23	23	23	23	23	23	23	23	23	23	23	23																						
125/32	125	150			315	355	18	100	150	300	310	295	355	340	23	23	23	23	23	23	23	23	23	23	23	23	23	23																						
125/40	125	150			365	400	18	100	150	300	355	315	400	360	23	23	23	23	23	23	23	23	23	23	23	23	23	23																						
150/32	150	200	160		365	450					355	315	400	360	23	23	23	23	23	23	23	23	23	23	23	23	23	23																						
150/40	150	200	160		450						385	345	430	390	23	23	23	23	23	23	23	23	23	23	23	23	23	23																						
125/26	11	125	150	140		315	355				310	295	355	340	500																																			
200/38M	13	200	250	200	670	400	500				410	360	465	415																																				
200/46	13	200	250	200	670	425	550	100	22	120	160	340	450	410	505	465	483.5	27	19	140	30	60	110	64.4	18	180	2																							
150/52	13	150	200	200	670	400	550	100	22	120	160	340	440	395	495	450	483.5	27	19	140	30	60	110	64.4	18	180	2																							

GENERAL DIMENSIONS / MOUNTING DETAILS

Foot Mounted (FM) Pump (PKD/PKD-QF)

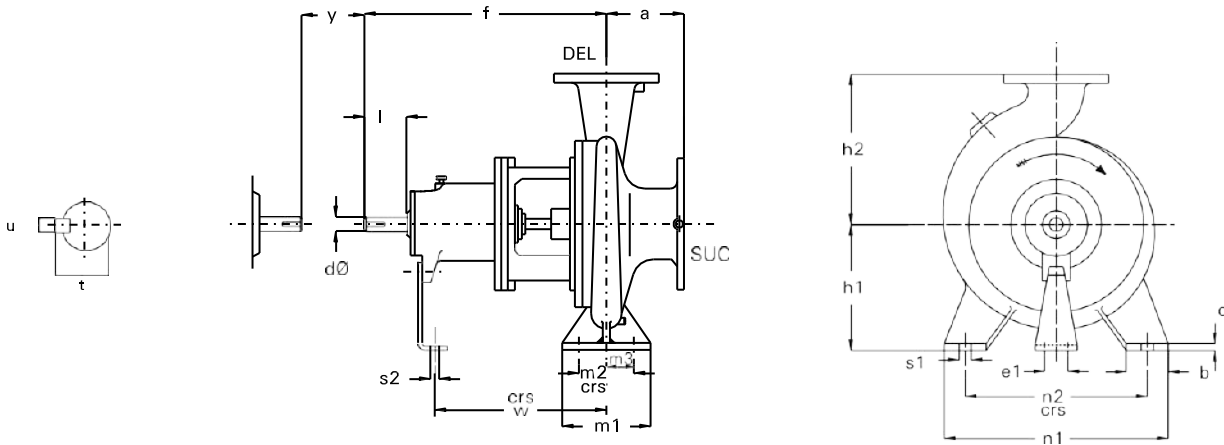


Pump Type	Drg. Unit	Pump Dimensions						Foot Dimensions								Shaft End						Wt. Kg.																													
		SUC	DEL	a	f	h1	h2	b	c	m1	m2	n1	n2	w	s1	s2	e1	dØ	l	t	u		y																												
20/13QF #	4	25	20	80	385	100	140	50	10	80	50	190	140	285	14	14	110	18	40	20.5	6	100	1																												
20/16QF #						132	150			210	160	285	14										14	110	18	40	20.5	6	100	38																					
20/20QF #						160	170			240	190	100	70										240	190	100	70	240	190	100	70	240	190	100	70	240	190	100	70	240	190											
25/16QF #	5	40	25	100	385	132	165	50	14	80	50	210	160	285	14	15	110	24	50	27	8	100	36																												
25/20QF #						180	210					160	265										212	11.5	265	212	11.5	265	212	11.5	265	212	11.5	265	212	11.5	265	212	11.5	265	212										
32/13						112	140					190	140										112	140	190	140	112	140	190	140	112	140	190	140	112	140	190	140	112	140	190	140									
32/16		50	32	80	385	385	132	160	50	14	100	70	240	190	285	14	15	110	24	50	27	8	100	38																											
32/20							160	180					240	190										160	180	240	190	160	180	240	190	160	180	240	190	160	180	240	190	160	180	240	190								
40/13							112	140					210	160										112	140	210	160	112	140	210	160	112	140	210	160	112	140	210	160	112	140	210	160	112	140						
40/16		65	40	100	385	385	132	160	50	14	100	70	240	190	285	14	15	110	24	50	27	8	100	42																											
40/20							160	180					265	212										160	180	265	212	160	180	265	212	160	180	265	212	160	180	265	212	160	180	265	212								
50/13							132	160					240	190										132	160	240	190	132	160	240	190	132	160	240	190	132	160	240	190	132	160	240	190	132	160	240	190				
50/16		80	50	100	385	385	160	180	50	14	100	70	265	212	285	14	15	110	24	50	27	8	100	46																											
50/20							200	265					212	200										265	212	200	265	212	200	265	212	200	265	212	200	265	212	200	265	212	200	265	212	200	265	212					
65/13							160	180					280	212										160	180	280	212	160	180	280	212	160	180	280	212	160	180	280	212	160	180	280	212	160	180	280	212				
25/26		7	50	25	100	500	180	225	65	14	125	95	320	250	370	14	15	110	32	80	35	10	140	90																											
32/26							180	225					320	250										180	225	320	250	180	225	320	250	180	225	320	250	180	225	320	250	180	225	320	250	180	225	320	250				
40/26							65	40					125	200										250	345	280	200	250	345	280	200	250	345	280	200	250	345	280	200	250	345	280	200	250	345	280	200	250			
40/32	80		50	125	500	500	180	225	65	14	125	95	320	250	370	14	15	110	32	80	35	10	140	90																											
50/26							225	280					345	280										225	280	345	280	225	280	345	280	225	280	345	280	225	280	345	280	225	280	345	280	225	280	345	280				
50/32							160	200					280	212										160	200	280	212	160	200	280	212	160	200	280	212	160	200	280	212	160	200	280	212	160	200	280	212	160	200	280	212
65/16	100		65	100	500	500	180	225	65	14	125	95	320	250	370	14	15	110	32	80	35	10	140	77																											
65/20							200	250					360	280										200	250	360	280	200	250	360	280	200	250	360	280	200	250	360	280	200	250	360	280	200	250	360	280	200	250	360	280
65/26							180	225					320	250										180	225	320	250	180	225	320	250	180	225	320	250	180	225	320	250	180	225	320	250	180	225	320	250	180	225	320	250
80/16	125		80	125	500	500	180	225	65	14	125	95	320	250	370	14	15	110	32	80	35	10	140	85																											
80/20							250	345					280	250										250	345	280	250	250	345	280	250	250	345	280	250	250	345	280	250	250	345	280	250	250	345	280	250	250	345	280	250
80/26							225	280					400	315										225	280	400	315	225	280	400	315	225	280	400	315	225	280	400	315	225	280	400	315	225	280	400	315	225	280	400	315
100/20	125		100	100	500	500	200	280	80	16	160	120	360	280	370	18	15	110	32	80	35	10	140	106																											
65/32	9		100	65	125	530	225	280	80	16	160	120	400	315	370	18	15	110	42	110	45	12	140	140																											
80/32							250	315					400	315										250	315	400	315	250	315	400	315	250	315	400	315	250	315	400	315	250	315	400	315	250	315	400	315	250	315	400	315
80/40		280					355	435					355	280										355	435	355	280	355	435	355	280	355	435	355	280	355	435	355	280	355	435	355	280	355	435	355	280	355	435	355	280
100/26		125	100	140	530	530	225	280	80	16	160	120	400	315	370	18	15	110	42	110	45	12	140	134																											
100/32							250	315					400	315										250	315	400	315	250	315	400	315	250	315	400	315	250	315	400	315	250	315	400	315	250	315	400	315	250	315	400	315
100/40							280	355					435	355										280	355	435	355	280	355	435	355	280	355	435	355	280	355	435	355	280	355	435	355	280	355	435	355	280	355	435	355
125/26		150	125	140	530	530	250	355	80	16	160	120	400	315	370	18	15	110	42	110	45	12	140	158																											
125/32							280	355					435	355										280	355	435	355	280	355	435	355	280	355	435	355	280	355	435	355	280	355	435	355	280	355	435	355	280	355	435	355
125/40							315	400					435	355										315	400	435	355	315	400	435	355	315	400	435	355	315	400	435	355	315	400	435	355	315	400	435	355	315	400	435	355
150/32		200	150	160	530	530	315	400	100	22	200	150	500	400	370	23	15	110	42	110	45	12	140	164																											
150/40							315	400					435	355										315	400	435	355	315	400	435	355	315	400	435	355	315	400	435	355	315	400	435	355	315	400	435	355	315	400	435	355
150/40 S		200	150	160	530	530	315	450	100	18	200	150	550	450	370	23	15	110	42	110	45	12	140	285																											

All dimensions are in mm

GENERAL DIMENSIONS / MOUNTING DETAILS

Foot Mounted (PKD/PKD QF) Pump



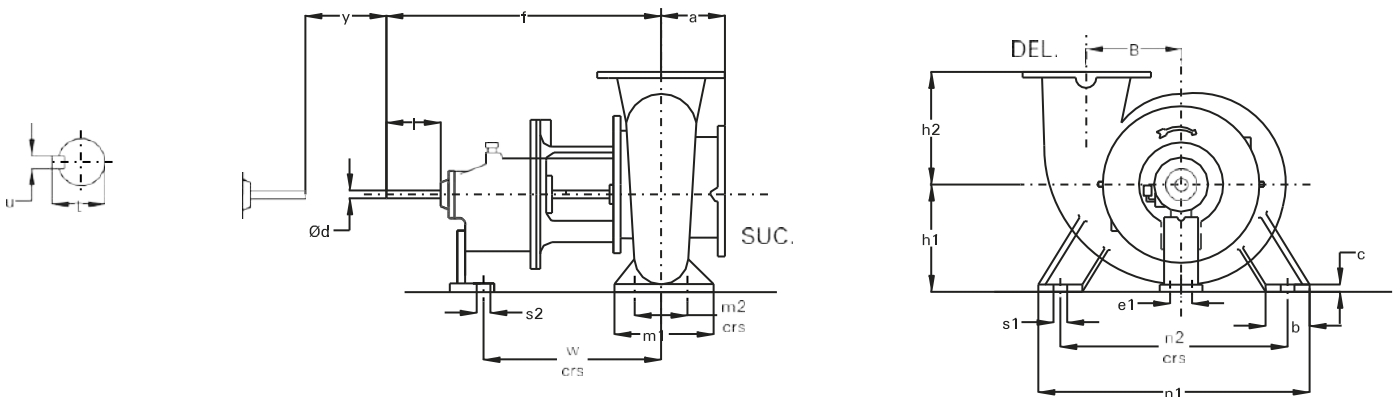
Pump Size	Driving Unit	Pump Dimensions						Foot Dimensions										Shaft End					Wt. Kg.	
		SUC	Del	a	f	h1	h2	b	c	m1	m2	m3	n1	n2	w	s1	s2	e1	d*	l	t	u		y
125/45 S	11A	150	125	160	670	350	450	100	20	180	120	70	550	450	500	23	19	140	48	110	51.4	14	180	290
150/43 S	11B	200	150	160	685	350	475	100	20	180	120	90	550	450	514	23	19	140	48	110	51.4	14	180	300
65/43 S	9	100	65	160	530	280	365	80	18	160	120	60	435	355	370	18	15	110	42	110	45	12	140	195

Pump Size	Driving Unit	Pump Dimensions						Foot Dimensions										Shaft End					Wt. Kg.
		DEL	SUC	a	f	h1	h2	b	c	m1	m2	n1	n2	w	s1	s2	e1	dØ	l	t	u	y	
100/16	7	100	125	150	500	225	280	65	14	125	95	320	250	370	14	15	110	32	80	35	10	140	97
125/20	9	125	125	140	530	250	315	80	16	160	120	400	315	370	18	15	110	42	110	45	12	140	138
125/26	11	125	150	140	670	280	355	80	16	160	120	400	315	500	18	19	140	48	110	51.5	14	140	190
150/26	9	150	200	160	530	280	375	100	20	200	150	500	400	370	23	15	110	42	110	45	12	140	175
150/52 S		150	200	200	670	400	550	150	30	240	180	650	530	483	27	19	140	60	110	64.4	18	180	435
200/38M S	13	200	250	200	670	400	500	120	30	240	180	550	430	483.5	27	19	140	60	110	64.4	18	180	550
200/46 S		200	250	200	670	425	550	120	30	240	180	640	540	483.5	27	19	140	60	110	64.4	18	180	560
80/40DV	11	80	125	125	670	280	355	80	16	160	120	435	355	500	18	19	140	48	110	51.5	14	180	177
100/40DV	11	100	150	140	670	280	355	100	18	200	150	500	400	500	23	19	140	48	110	51.5	14	180	200

Note :

- # These pumps provided with semi open impeller only.
- § These pumps cannot be supplied with semi open impeller.

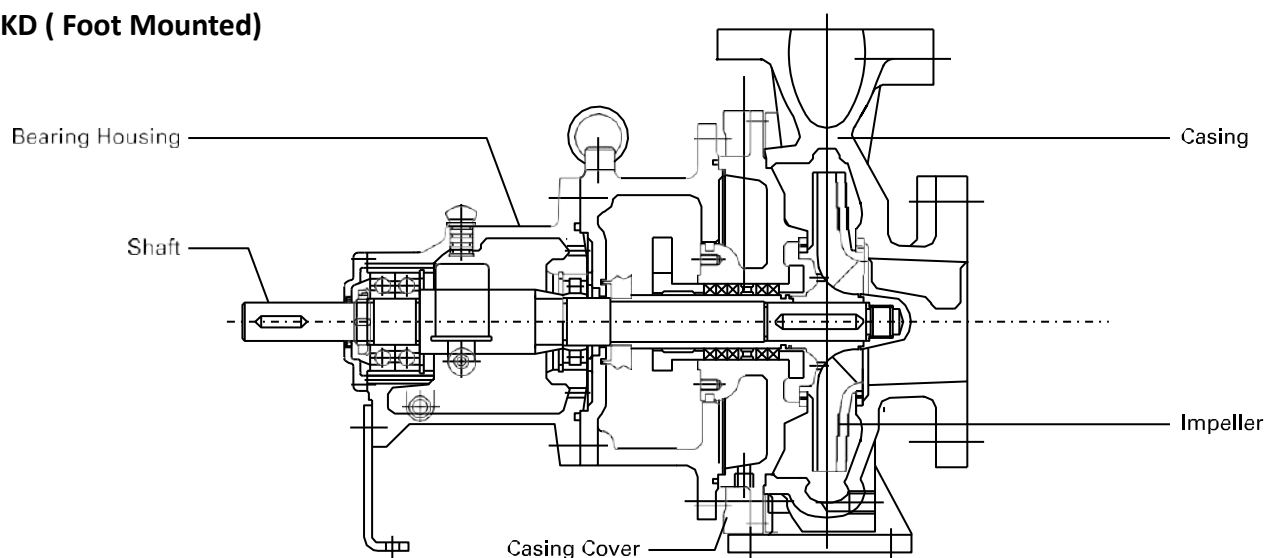
All dimensions are in mm



Pump Size	Driving Unit	Pump Dimensions						Foot Dimensions										Shaft End					Wt. Kg.	
		SUC	Del	a	F	H1	h2	B	b	c	m1	m2	n1	n2	w	s1	s2	e1	Ød4	l	t	u		y
200 / 33	11C	200	200	200	720	370	315	265	100	25	335	265	630	560	650	27	19	140	48	110	51.4	14	180	280

CROSS SECTIONAL VIEW

PKD (Foot Mounted)

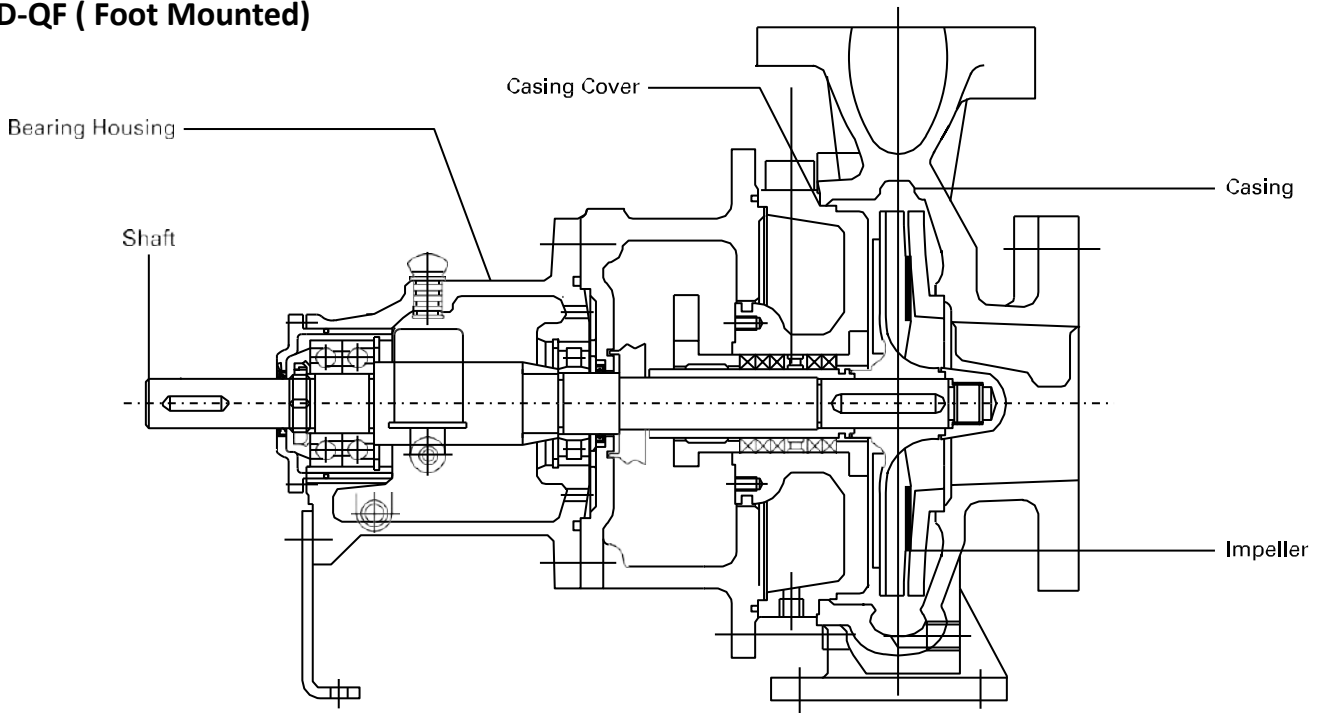


INTERCHANGEABILITY OF COMPONENTS

Pump Unit	Size	Casing	Impeller	Casing Cover	Bearing Housing & Shaft
5	32/13	1	1	1	
	40/13	2	2		
	50/13	3	3		
	65/13	4	4		
	32/16	5	5	2	
	32/16A	6	6	3	
	40/16	7	7	2	
	50/16	8	8	2	
	50/16A	9	9	3	
	32/20	10	10	4	
	32/20A	11	11	5	
	40/20	12	12	4	
	40/20A	13	13	5	
50/20	14	14	4		
7	65/16	14	15	6	
	80/16	15	16	7	
	65/20	16	17		
	80/20	17	18		
	100/20	18	19		
	25/26	19	20	8	
	32/26	20	21	9	
	40/26	21	22		
	50/26	22	23		
	65/26	23	24		
	65/26N	24	25		
	80/26	24	26		
	40/32	25	27		
50/32	26	28	11		
100/16	27	29	12		
100/26	28	30	13		
125/26	29	31			
65/32 (1450 rpm)	30	32			
65/32 (2900 rpm)	31	33		14	
80/32	31	34		15	
100/32	32	35			
125/32	33	36			
150/32	34	37			
150/32N	34	38		16	
80/40	35	39		17	
80/40N	35	40			
100/40	36	41			
125/40	37	42			
125/40N	37	43			
125/20	40	46	20		
150/26	41	47	21		
150/40	38	44	18		
65/43	39	45	19		
11	80/40DV	42	48	17	
	125/26 (2900 rpm)	29	31	20	
	100/40DV	43	41	17	
	11/A	44	50	21	
	11/B	45	51	22	
11/C	200/33	46	49	23	
	150/52	47	52	24	
13	200/38M	48	53	25	
	200/46	49	54	26	

CROSS SECTIONAL DRAWING

PKD-QF (Foot Mounted)



INTERCHANGEABILITY OF COMPONENTS

Pump Unit	Size	Casing	Impeller	Casing Cover	Bearing Housing & Shaft
	20/13	1	1	1	
	20/16	2	2	2	
	20/20	3	3	3	
	32/13	4	4	4	
	40/13	5	5		
	50/13	6	6		
	65/13	7	7		
	25/16	8	8	5	
	32/16	9	9	6	
	40/16	10	10	7	
	50/16	11	11	8	
	32/20	12	12		
	40/20	13	13	9	
50/20	14	14	10		
65/16	15	15			
80/16	16	16			
65/20	17	17		11	
80/20	18	18		12	
100/20	19	19			
32/26	20	20		13	
40/26	21	21		14	
50/26	22	22			
65/26	23	23			
80/26	24	24	15		
40/32	25	25	16		
50/32	26	26			
100/26	27	27	17		
125/26	28	28			
65/32	29	29		18	
80/32	30	30			
100/32	31	31			
125/32	32	32			
150/32	33	33		19	
80/40	34	34		20	
100/40	35	35		21	
125/40	36	36		22	

FEATURES (PKDT)

Applications

PKD-T pumps are designed for handling Thermic fluids, Synthetic Oil, Hot Oil etc. The working temperature range is normally 200°C and above.

Constructional Features

Pump with centerline mounted delivery casing

Pump with stuffing box cooling and bearing cooling arrangement

Pump in all Cast Steel construction i.e. MOC code 10. (All CF8M MOC very rarely offered.)

Pump with Grafoil packing rings for gland packed execution

Pump in solid gland in cast steel material. Instead of spilt gland.

Pump with special close clearance stuffing box bush

Gaskets:

- Spiral wound gasket in between casing and casing cover

- Other gaskets coming in liquid contact are in Grafoil

Mechanical seals are metal bellow type as per seal manufacturer's recommendations

Stuffing box jacket is formed using vition 'O'ring or welding sheet metal to casing cover depending upon considering temperature of fluid

Metallic oil breather

Flange Drilling

Flange drilling will be as per ANSI B16.5 CL 150 RF or ANSI B16.5 CL 300 RF. Drilling standard will depend on the temperature of fluid and working pressure.

Care Taken For Accessories Selection

Due to high temperature applications pumps to be offered with suitable API cooling plans or cooling plan provisions. Plan G and H are popular.

Pumps are offered with flexible metallic coupling. Use of rubber spider is avoided.

Unique Feature

Pump can be offered with CE marking

Depending upon the application, area classification ATEX marking can be done

- Heat barrier is created by way of cooling the stuffing box region & sufficient space is kept between stuffing box and bearing, so that heat is not conducted to bearings

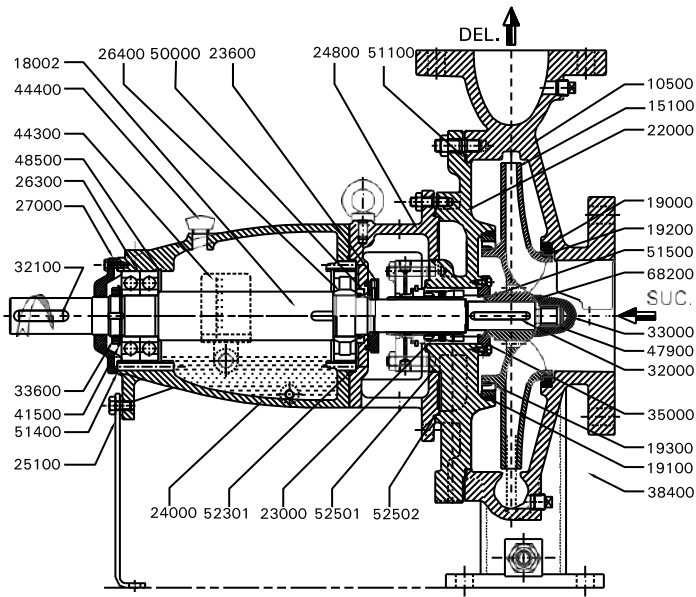
- Special heat resistant painting



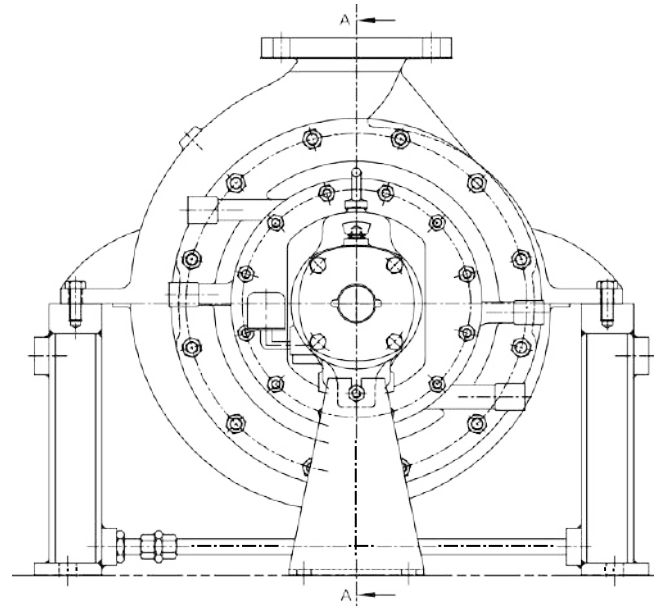
PK PUMPS PVT.LTD.

AN ISO 9001-2008 COMPANY

CROSS SECTIONAL DRAWING (PKDT)



SECTION A-A



VIEW FROM DRIVING END

PART NO.	QTY	PART DESCRIPTION	PART NO.	QTY	PART DESCRIPTION
10500	01	Pump Casing	32100	01	Key For Coupling
15100	01	Enclosed Impeller	33000	01	Impeller Nut
18002	01	Pump Shaft	33600	01	Impeller Lock Nut
19000	01	Casing Ring Suc.	35000	01	Stuffing Box Bush
19100	01	Casing Ring Del.	38400	01	Pad For Clm Pump
19200	01	Impeller Ring Suc.	41500	01	Lock Washer For Bearing Lock Nut
19300	01	Impeller Ring Del.	43000	01	Gland Packing
22000	01	Casing Cover	44300	01	Constant Level Oiler
22900	01	Split Gland	44400	01	Oil Feeding Plug
23600	01	Liquid Deflector	47900	01	Helicoil Insert
24000	01	Bearing Housing	48500	01	Internal Circlip
24800	01	Lantern Bracket	50001	01	Oil Seal Ds
25100	01	Support Foot	51100	01	Gasket for Csg & Csg Cover
26300	01	Angular Contact Bearing De	51400	01	Gasket for De Bearing Cover
26400	01	Cylindrical Roller Bearing Nde	51500	01	Gasket for Sleeve & Imp
27000	01	Bearing Cover (de)	52300	01	O-ring
31100	01	Shaft Sleeve	52501	01	O-ring for C.cover & Lant. Bracket
32000	01	Key For Impeller	52502	01	O-ring for Lan. Bkt. & Csg.cover
			68200	01	Gasket Betw. Impeller Nut & Impeller Lock Nut

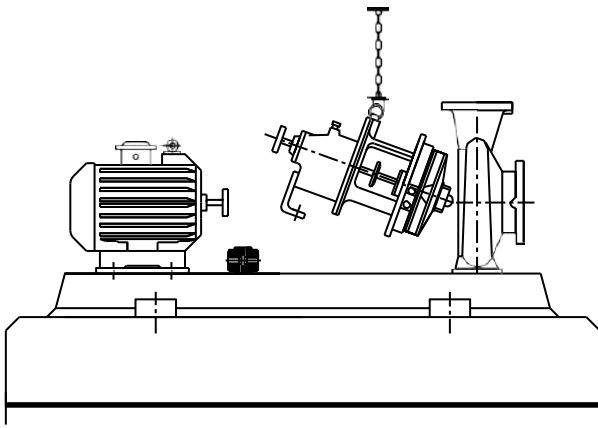


P K PUMPS PVT.LTD.

AN ISO 9001-2008 COMPANY

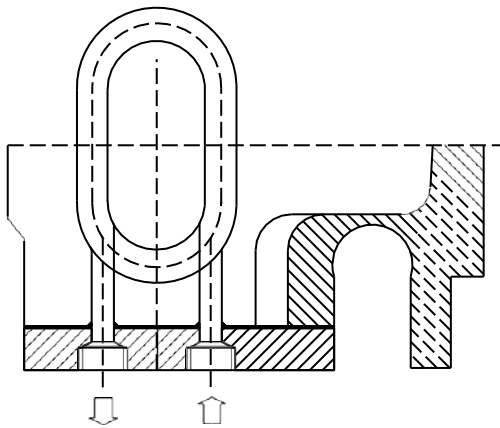
CONSTRUCTIONAL FEATURES

BACK PULL OUT ARRANGEMENT



Using spacer type coupling, back-pullout design enables the pump rotating unit to be removed without disturbing the pipe connections. The prime mover is also undisturbed. This reduces servicing time, resulting in lower maintenance costs and reduction in production losses.

ALTERNATIVES AVAILABLE



Bearing Oil Cooling Arrangement

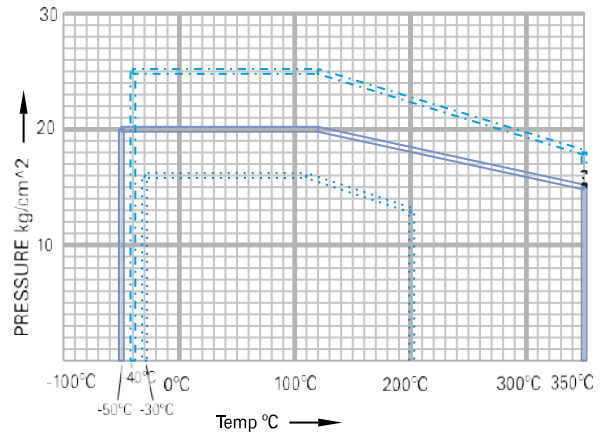
For high temperature applications above 180°C bearing oil cooling arrangement is provided.

Steam Jacket Arrangement

This special design can be offered for handling liquids that cannot be pumped when cold. Except for pump casing, casing cover and gland, all parts are of standard design.

Steam Jacket Arrangement

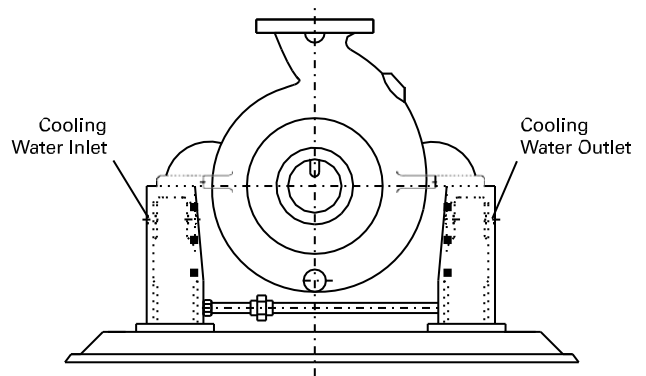
WORKING TEMPERATURE AND PRESSURE



Note :

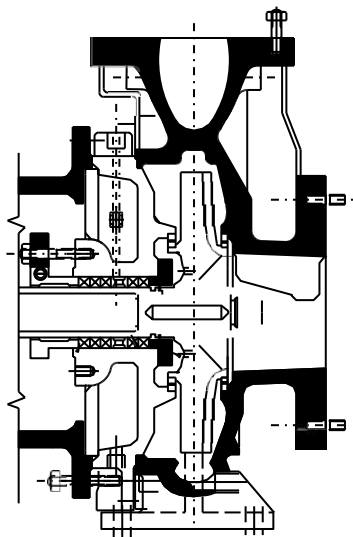
The pressure and temperature data holds good only if flanges are suitable to a particular operating pressure and temperature.

—	CAST ST & ST. STEEL
- - -	S.G. IRON
· · ·	C.I. & BRONZE



Centre line Mounting

For high temperature applications between 180°C and 350°C, pumps are offered with centreline mounting.



MATERIAL OF CONSTRUCTION

Casing / Casing Cover	Cast Iron / Cast Steel / Stainless Steel / Duplex Steel
Impeller	Cast Iron / Bronze / Cast Steel / Stainless Steel / Chrome Steel / Duplex Steel
Wear Ring / Wear Plate	Cast Iron / Bronze / Steel
Shaft	Carbon Steel / Stainless Steel / Duplex Steel
Shaft Sleeve	Stainless Steel / Bronze

* Bronze material will be suitable for temperature upto 105°C

** Material of construction shall be on the basis of application & liquid characteristics

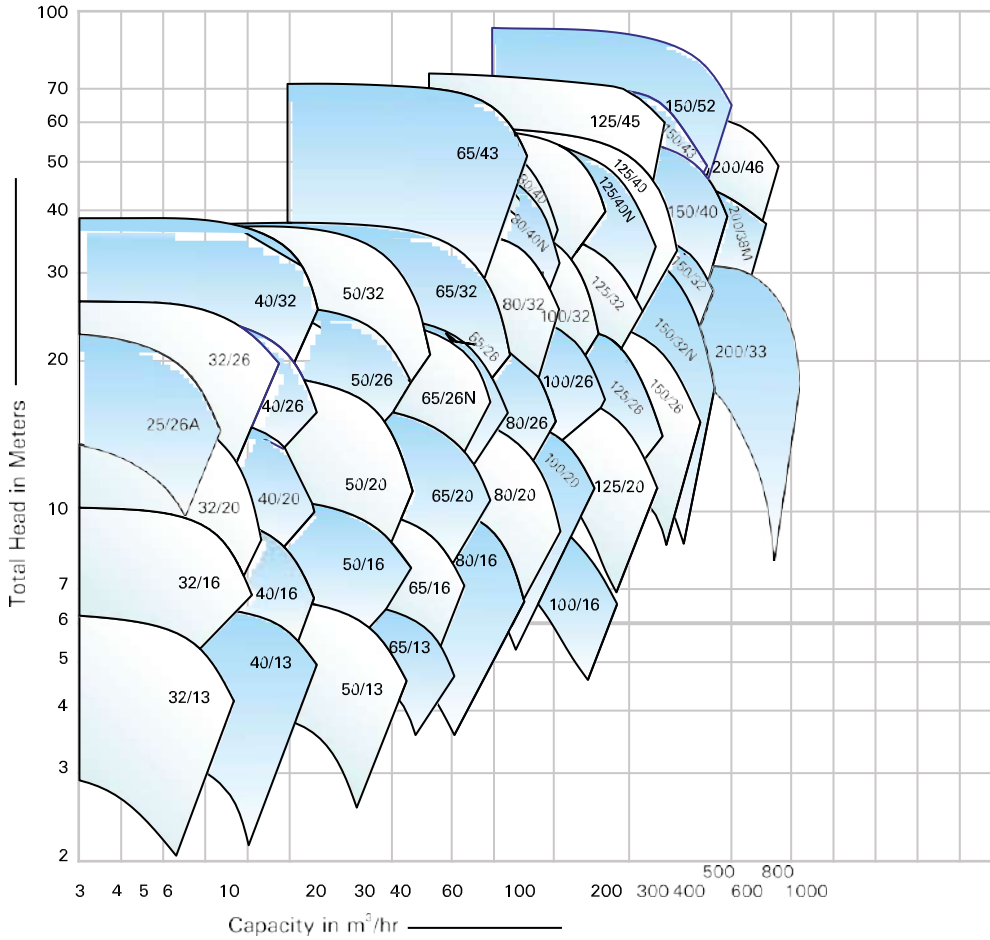
MATERIAL STANDARDS - GENERAL INFORMATION

Material Type	Indian Standard (IS)	American Standard (ASTM)	DIN
Cast Iron			
Cast Iron	IS 210 Gr. FG 260	ASTM A48 Class 40	(0.6025)DIN 1691 GG25
Spheroidal Graphite Cast Iron			
SG Iron (Ductile Iron)	IS 1865 Gr 400/15	A536, 60-40-18	(0.7040)DIN1693 GGG40
SG Iron (Ductile Iron)	IS 1865 Gr 500/7	A536, 65-45-12	(0.7050)DIN1693 GGG50
Carbon Steel			
Carbon steel (Wrought)	IS 1570 (part II) Gr. 40C8	ASTM A107 Gr. 1040	(1.1186)C40E/CK40
Carbon steel (Wrought)	IS 1570 (part II) Gr. 20C8	ASTM A107 Gr. 1020	(1.0402)C22
MS Steel	MS IS 2062 - Fe 410 W A	ASTM - A283 GR.D FABRICATED STEEL44	DIN 1700 GR ST4-2
Cast Steel Grades			
Cast Steel		ASTMA 216 Gr. WCB	1.0619(GS-C25)
Cast Stainless Steel			
Stainless Steel CF8M	IS 3444 Gr. 4	ASTMA 351 Gr. CF8M	1.4408(GX5CrNiMo19-11-2)
Stainless Steel CF8M	IS 3444 Gr. 4	ASTMA 743 Gr. CF8M	1.4408(GX5CrNiMo19-11-2)
Stainless Steel CF3M	IS 3444 Gr. 16	ASTMA 351 Gr. CF3M	1.4409(GX2CrNiMo19-11-2)
Stainless Steel CF3M	IS 3444 Gr. 16	ASTMA 743 Gr. CF3M	1.4409(GX2CrNiMo19-11-2)
Stainless Steel CF8	IS 3444 Gr. 1	ASTMA 351 Gr. CF8	1.4301(X5CrNi18-10)
Stainless Steel CF3	IS 3444 Gr. 15	ASTMA 351 Gr. CF3	1.4306(X2CrNi19 11)
Cast Chromium Stainless Steel			
Stainless Steel CA15	IS 3444 Gr. 10	ASTMA 217 Gr. CA15	1.4106&1.448(DIN17445 GX12Cr14)
Stainless Steel CA15	IS 3444 Gr. 10	ASTMA 743 Gr. CA15	1.4106&1.448(DIN17445 GX12Cr14)
Stainless Steel CA6NM	IS 3444 Gr. 24	ASTMA 487 Gr. CA6NM	1.4313&1.4317(GX5CrNiMo13-4)
Stainless Steel CA6NM	IS 3444 Gr. 24	ASTMA 743 Gr. CA6NM	1.4313&1.4317(GX5CrNiMo13-4)
Chromium Stainless Steel Round Bar Material			
Stainless Steel 410	IS 1570 (part V) Gr. X12Cr12	ASTMA 276 type 410	1.4006(X10Cr13)
Stainless Steel 420	IS 1570 (part V) Gr. X20Cr13	ASTMA 276 type 420	1.4021(X20Cr13)
Stainless Steel 431	IS 1570 (part V) Gr. X15Cr16Ni2	ASTMA 276 type 431	1.4057(X20CrNi17)
Stainless Steel 316	IS 1570 (part V) Gr. X04Cr17Ni12Mo2	ASTMA 276 type 316	1.4401(X5CrNiMo17122)
Stainless Steel 316L	IS 1570 (part V) Gr. X02Cr17Ni12Mo2	ASTMA 276 type316L	1.4404(X2CrNiMo1810)
Cast Duplex Steel			
Duplex Steel 1A		ASTMA 890 Gr. CD4MCu	25Cr-5Ni-Mo-Cu
Duplex Steel 2A		ASTMA 890 Gr. CE6MN	24Cr-10Ni-Mo-N
Duplex Steel 3A		ASTMA 890 Gr. CD6MN	25Cr-5Ni-Mo-N
Super Duplex steel 4A		ASTMA 890 Gr. CD3MN	25Cr-7Ni-Mo-N
Super Duplex steel 5A		ASTMA 890 Gr. CE3MN	24Cr-10Ni-Mo-N
Non Ferrous Materials			
Bronze	IS 318 Gr. LTB2 (CuSn5Zn5Pb5C)	ASTMB 584 - C90500	DIN 1705 Rg 5
Phosphor Bronze	IS 28 Gr. 1 (CuSn11PC)		
Zinc Free Bronze	IS 28 Gr. 1 (CuSn10C)		

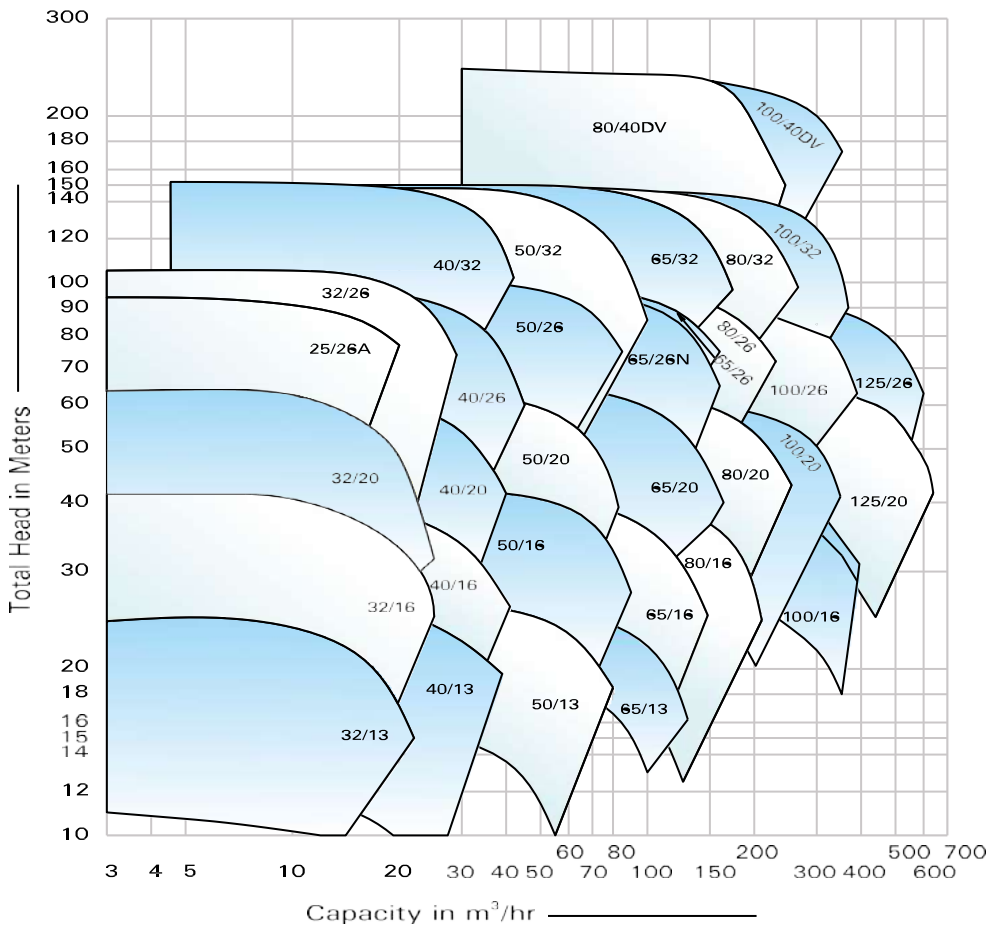


FAMILY CURVES

Family Curve of KPD Process Pump at 1450 rpm- 50Hz

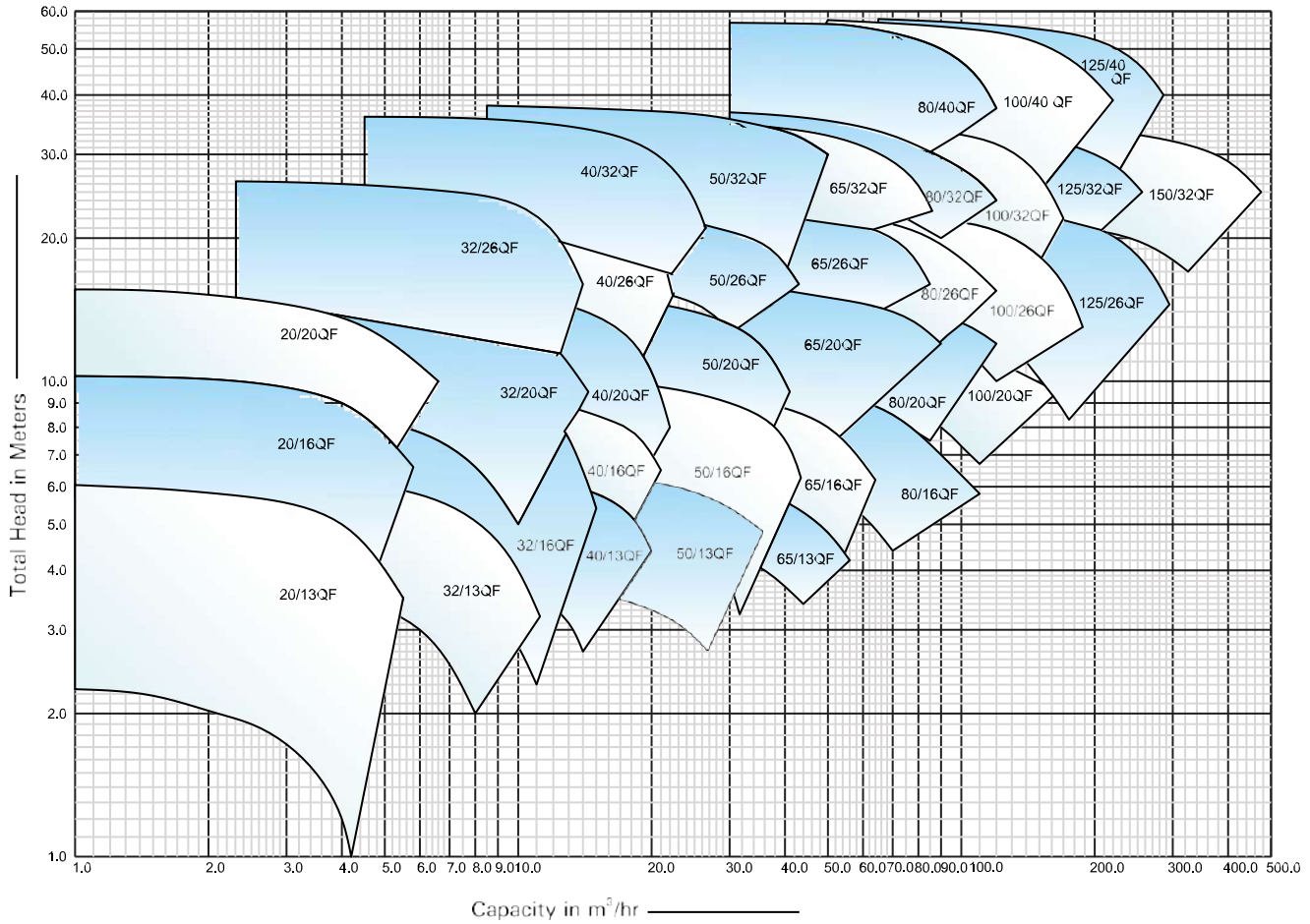


Family Curve of KPD Process Pump at 2900 rpm- 50Hz

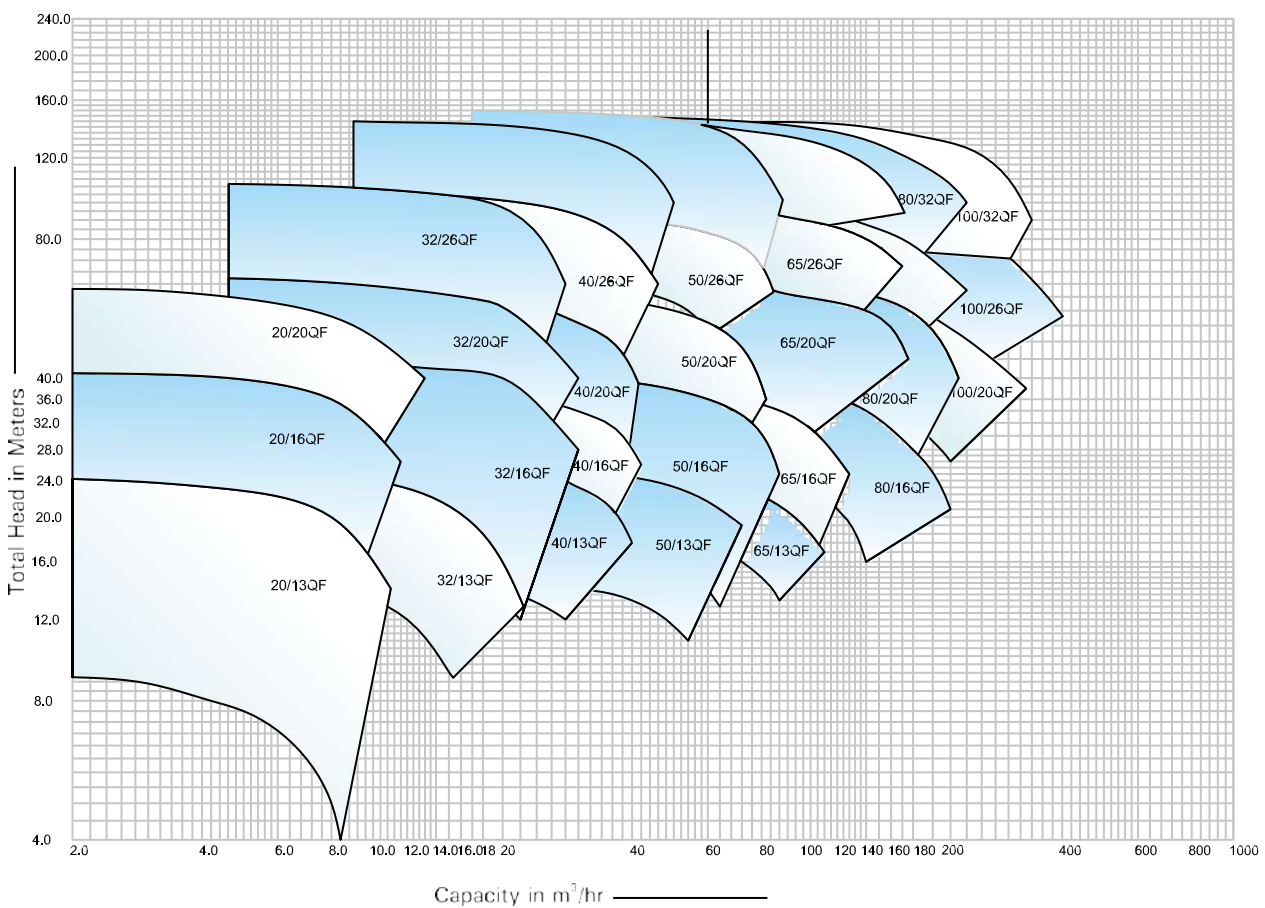


FAMILY CURVES

Family Curve of KPD-QF Process Pump at 1450 rpm 50 Hz

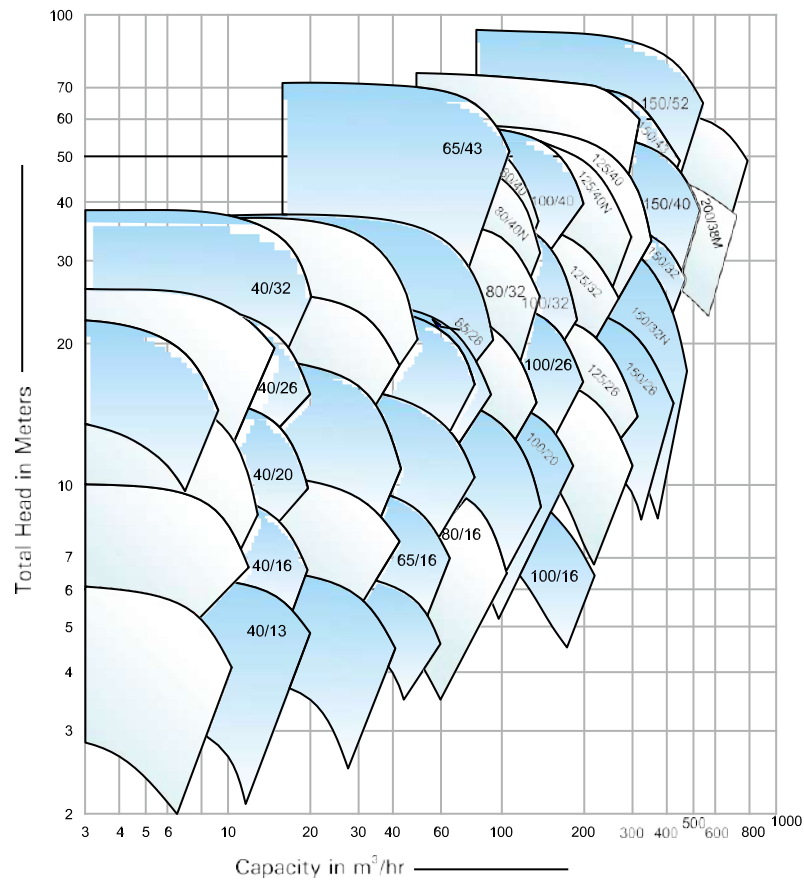


Family Curve of KPD-QF Process Pump at 2900 rpm 50 Hz

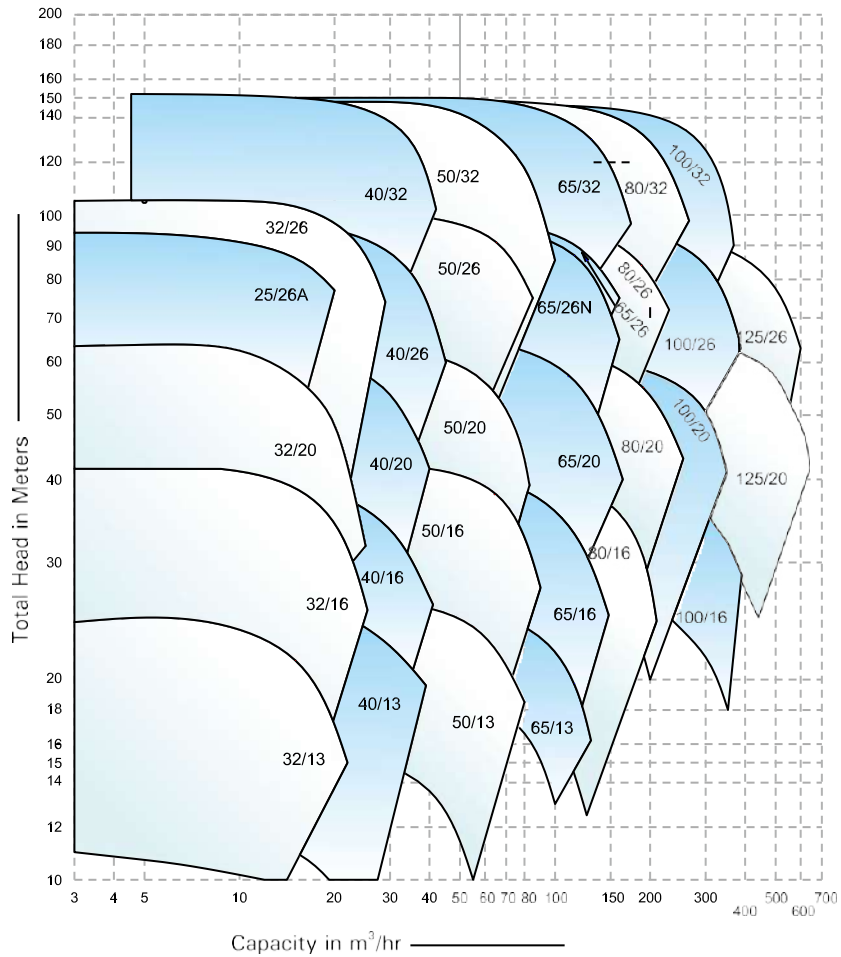


FAMILY CURVES

Family Curve of KPDT Pump at 1450 rpm



Family Curve of KPDT Pump at 2900 rpm





P K PUMPS PVT.LTD.

AN ISO 9001-2008 COMPANY

P.K.PUMPS designs, develops, manufactures, and furnishes complete industrial pumping systems for the mining, agriculture, process, and power industries. We have been in charge of significant advancements in sealing systems and centrifugal pump designs for more than 30 years.



Address: P.K.PUMPS AND PRECICAST PVT LTD, PLOT S40/1, BEHIND DIAMOND GRANITE, MIDC KUPWAD, SANGLI, MAHARASHTRA, INDIA

Phone: +91-9422407840, +91-9175030202, +91-9890151449

Email: pkpumps@rediffmail.com

Web: www.pkpumps.in